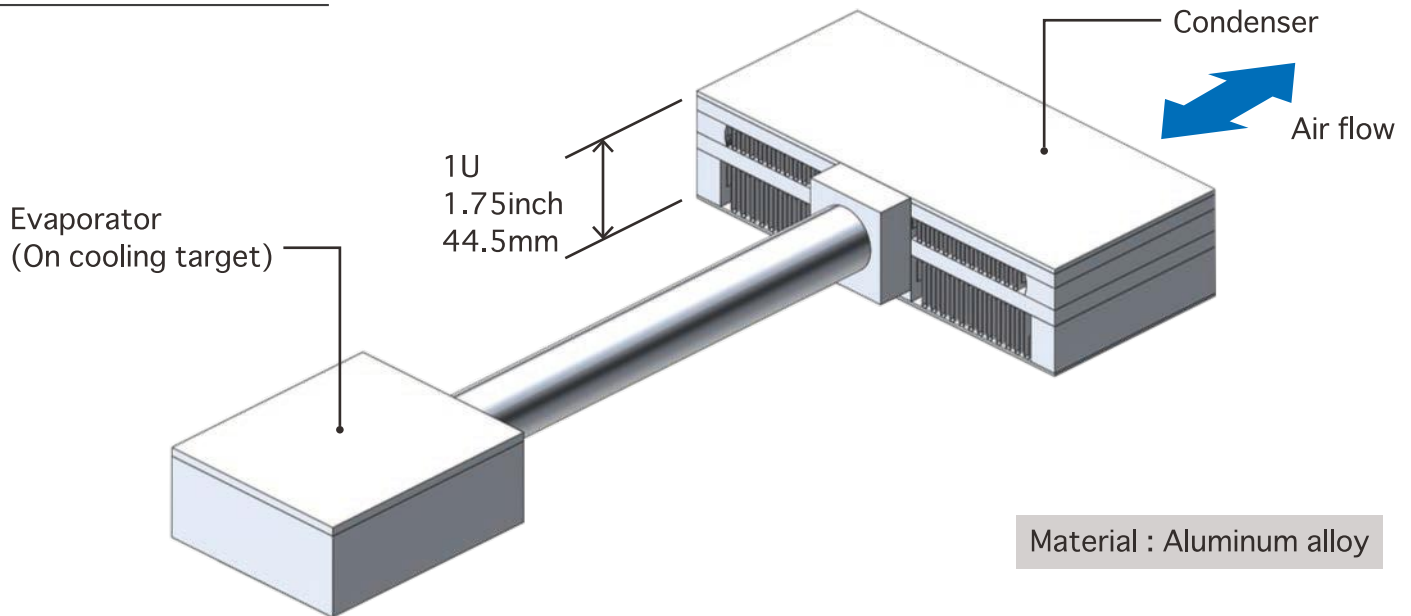


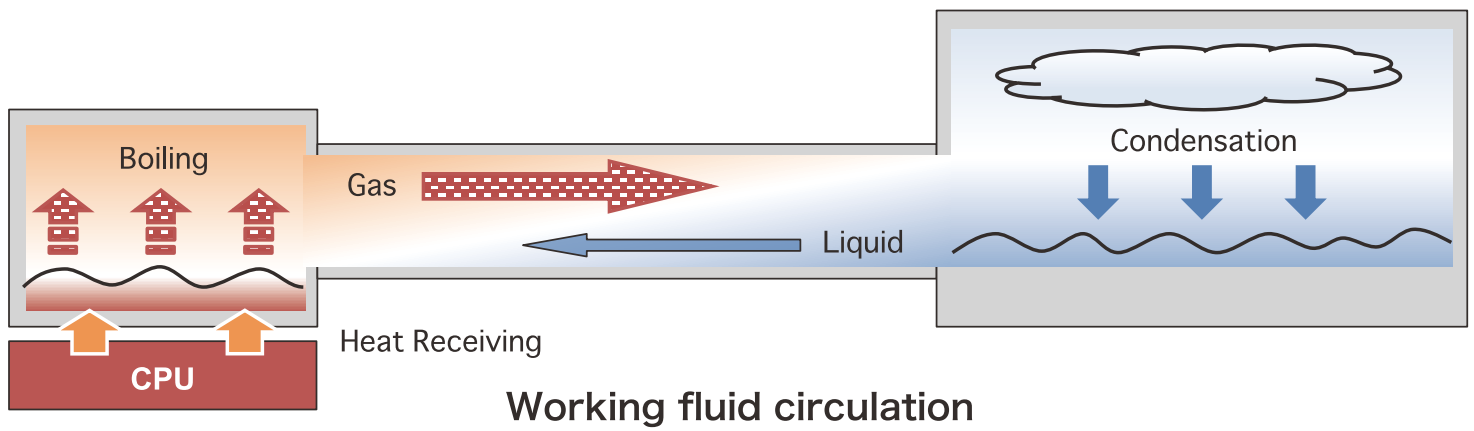
# Flat SIPHOREX 2-phase cooling solution

## Basic structure

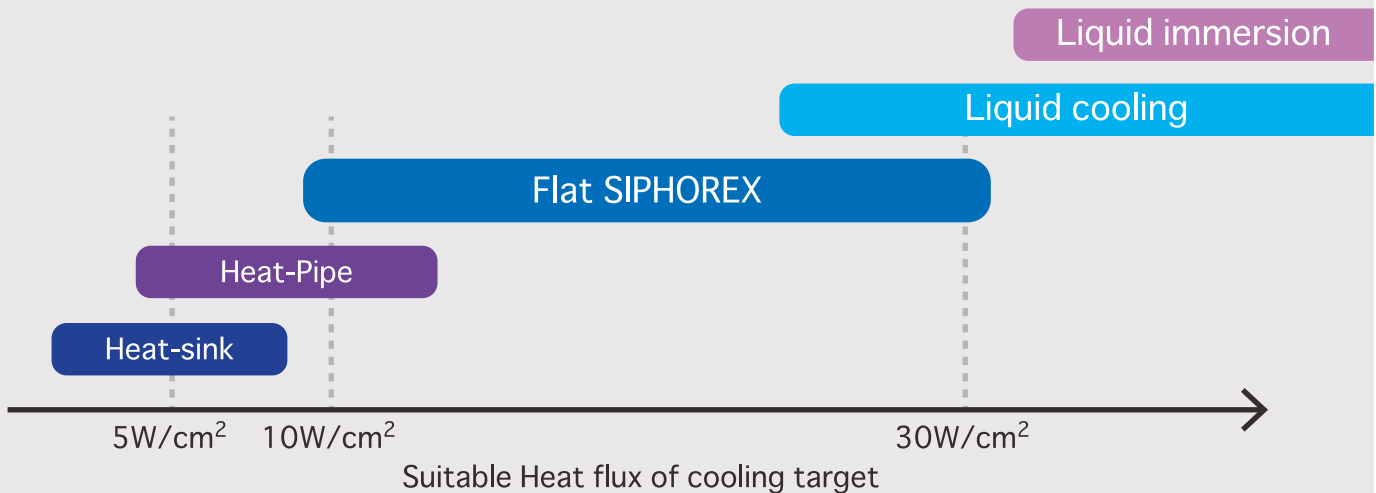
### Sample Illustration



A two-phase thermo-siphon consists of a closed system, vacuumed and filled with a working fluid. The working principle of a two-phase closed thermo-siphon is shown in the picture on the below.



## Suitable range of "Flat SIPHOREX" for Heat flux

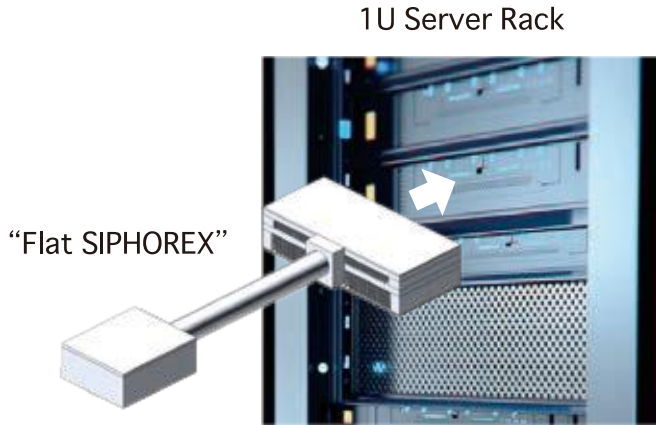


# Flat SIPHOREX 2-phase cooling solution

## Characteristics

### Compactness

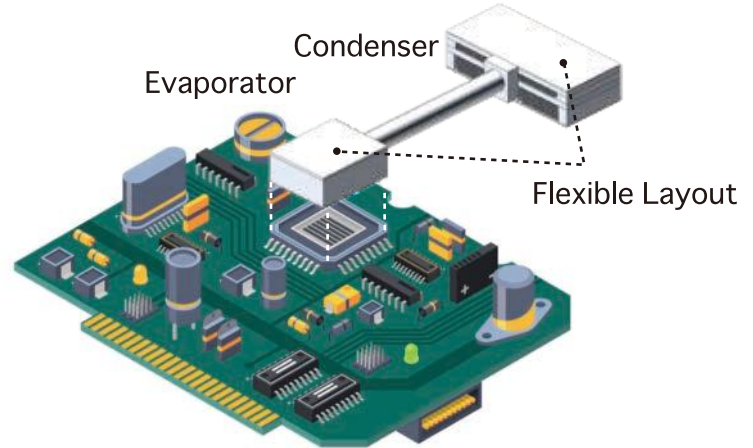
“Flat SIPHOREX” is **low-height and flat**, which can be housed with the motherboard in 1U server.



### Flexibility

Evaporator and Condenser of “Flat SIPHOREX” are connected with just pipe (with no pump).

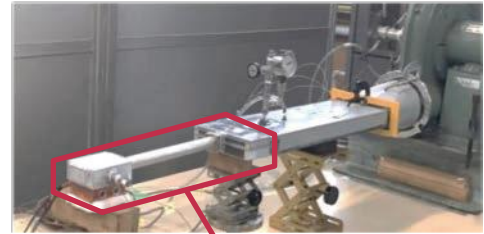
It allows flexible layout design for the motherboard and CPU cooler.



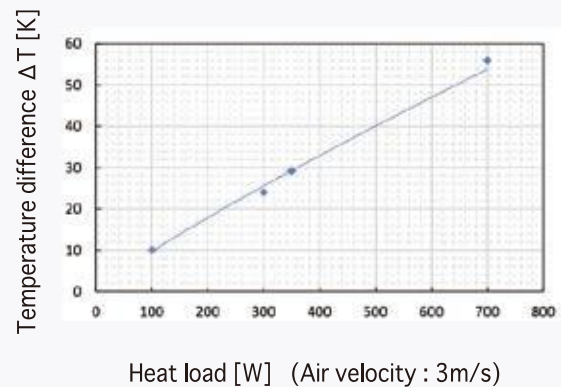
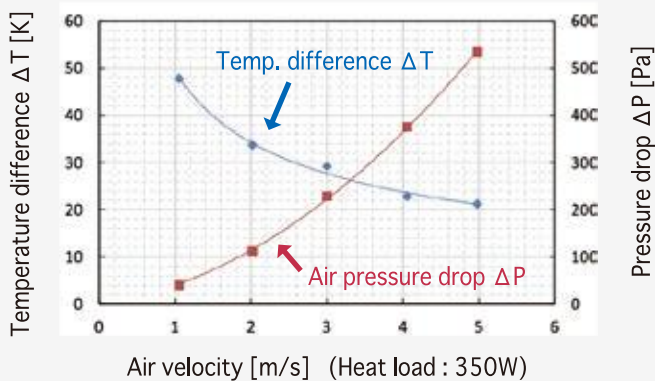
## Performance example

### Condition

Air Temperature	35 °C
Air velocity	3 m/s
Heat source area	50 mm x 50 mm
Heat load	350 W



### Result



**Sumitomo Precision Products Co., Ltd.** ☎ +81-3-3217-2812

Heat exchangers Sales & Marketing Department  
Sumitomo Corporation Takebashi Bldg 4th floor,  
1-2-2 Hitotsubashi, Chiyoda-ku, Tokyo 100-0003, Japan

WEB <http://www.spp.co.jp/netu/en/>  
FAX +81-3-3217-2822 E-mail [netu-sales@spp.co.jp](mailto:netu-sales@spp.co.jp)